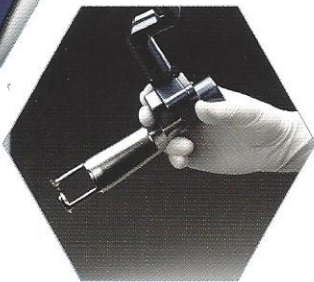
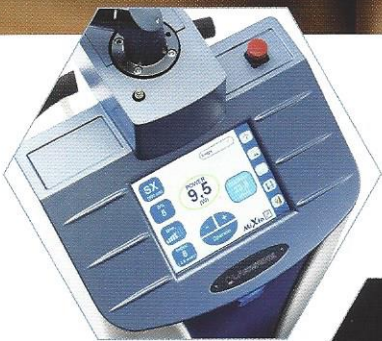


# THE EVOLUTION OF PERFECTION.

THE INNOVATIVE FRACTIONAL CO<sub>2</sub> TECHNOLOGY FOR NEW AESTHETIC EXCELLENCE.



## SLIM II EVOLUTION II

enhanced by *MiXto* **PRO**



**LASERING**  
Medical Laser



# UNIQUE STATE OF THE ART CO<sub>2</sub> FRACTIONAL TECHNOLOGY

Slim Evolution II CO<sub>2</sub> laser system enhanced with MiXto Pro scanner technology is the most fully-developed platform available on the market for skin resurfacing, wrinkle and scar reduction.

Lasering was the first company in the world to apply the fractional concept to a CO<sub>2</sub> laser system with microspots non-sequentially distributed over the tissue following a "Z" algorithm based scan pattern.

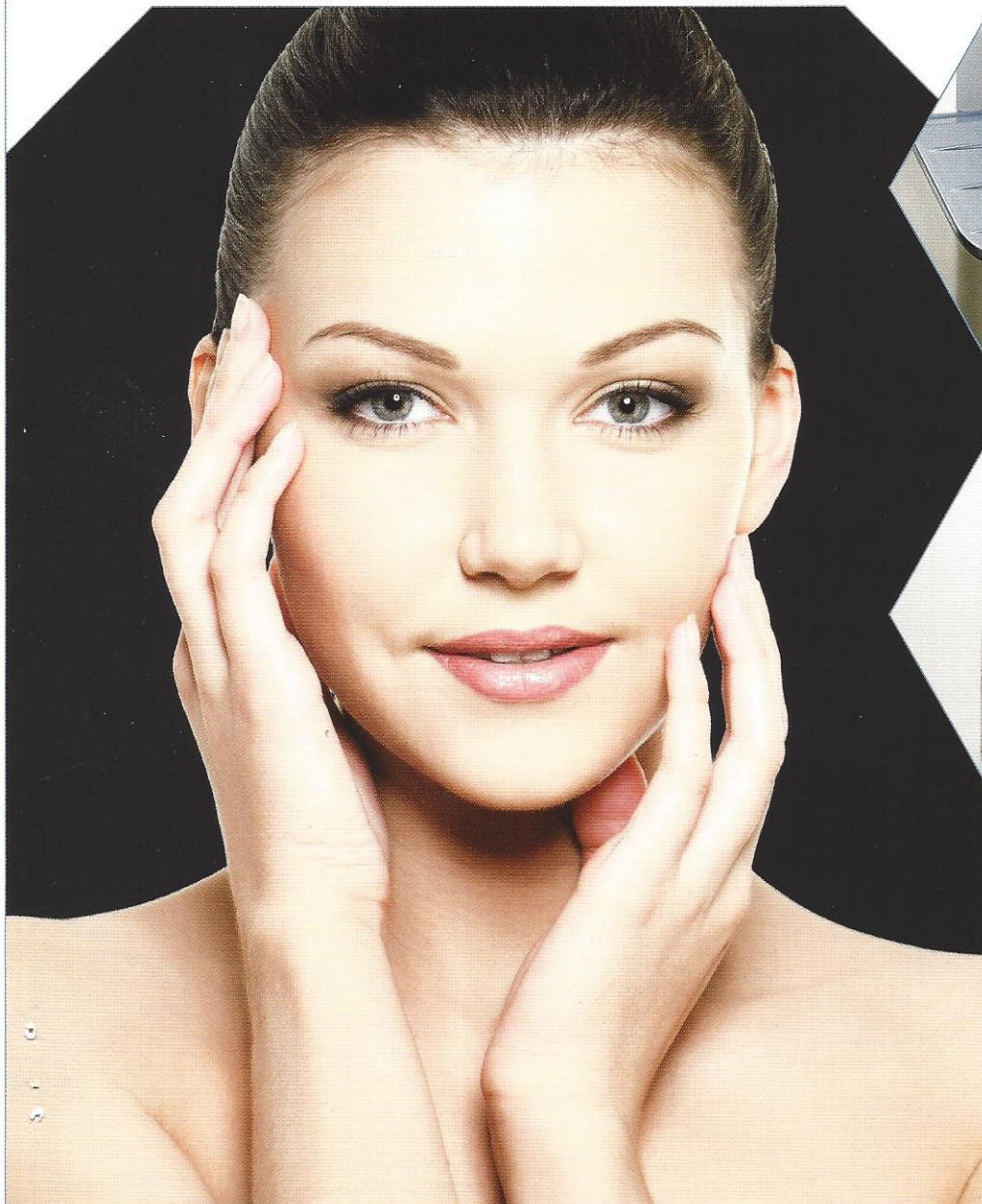
MiXto Pro is a unique patented system that functions using CHOPPED CW emission guaranteeing uniform energy distribution across tissue delivering greater heat to the dermis over traditional short pulsed CO<sub>2</sub> laser systems.

MiXto Pro allows the operator to work in the widest operating range that varies from soft ablation (toning/tightening) to hard ablation (conventional skin resurfacing) going through countless intermediate steps so that all the patient's needs and expectations can be satisfied.

Slim Evolution II is a very versatile system with a complete range of accessories for use in numerous fields of surgery.

## ADVANTAGES

- Best compromise between quality of result and length of downtime
- Greater collagen stimulation
- Shorter treatment time
- Lowest risk of side effects
- Maximum patient comfort during treatment
- Simplified post-care





# SLIM II EVOLUTION II

## USER – FRIENDLY

- Touch screen interface for ultimate ease of use
- Clear graphics with important parameters continuously visible
- Storage of personalized treatment settings
- Built with the future in mind being upgradable in stages

## INTEGRATED SAFETY CONTROL

- Sophisticated low tolerance control systems guaranteeing high precision in the energy value delivered to tissue
- Automatic spot-size recognition guaranteeing correct parameter settings
- Advanced error monitoring ensuring ultimate operator and patient safety
- Ergonomic wheel base designed for high stability and ease of movement

## SUPERIOR RESULTS

**MiXto** 

- Over four years' experience using Chopped CW Micro-Fractional technology producing dramatic results with 100% customer satisfaction
- More heat with Chopped CW over short pulsed CO<sub>2</sub> technology
- The "Z" algorithm scan pattern lowers risk of side effects while maximizing patient comfort
- One handpiece with two different spot sizes (No consumables).



# SYSTEM SPECIFICATIONS

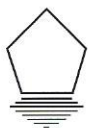
**SLIM II**  
EVOLUTION II

**MiXto** 

Laser type	CO <sub>2</sub> Laser
Wavelength	10.600 nm
Laser Operating Modes	Continuous Wave (CW), Pulsar, SuperPulse
CW Power	0.5 - 30 W at tissue
SuperPulse Average Power	0.5 - 12 W at tissue
Pulsar Average Power	5 - 25 W at tissue
Tissue Exposure Modes	Continuous, Single Pulse, Repeat Pulse
Aiming Beam	Red diode Laser, 635 nm
Articulated Arm	Lightweight, aluminium fiber, 7-joint spring balanced
User Interface	8" Color TFT with Touch-screen technology
Memory Settings	> 1000
Electrical Requirements	100 - 240 Vac, 4A (Max) / 50-60Hz
Dimensions	37 cm W x 43 cm D x 123 cm H
Weight	40 Kg

Fractional Resurfacing "SX"	
Spot size	180 µm, 300 µm (automatic recognition)
Laser beam Energy	Variable: 1 - 480 mJ per Spot
Pulse Width	From 2.5 msec (Index 8) to 16 msec (Index 1)
Fractional Coverage settings	5 - 40%, Using "Z" Algorithm scan pattern
Scan Area	300 µm Spot: 6x6 to 20x20 mm 180 µm Spot: 5x5 to 12x12 mm

100% Resurfacing "T" (Total Coverage)	
Spot size	300 µm only
Laser beam Energy	Variable from 1 - 24 mJ
Scan Pattern Shapes	Line, Rectangle, Square, Triangle, Circle, Donut
Dwell Time (Pulse width) settings	100 to 800 µs
Scan Area	6x6 to 20x20 mm



**LASERING**  
Medical Laser

**LASERING S.r.l.**  
Via Staffette Partigiane, 54 - 41122 Modena, Italy  
Tel. + 39 059 450 999  
Fax + 39 059 311 096  
www.lasering.it | www.lasering-med.com  
E-mail: lasering@lasering.it

**LASERING USA**  
2246 Camino Ramon  
San Ramon, CA 94583  
Phone 866-471-0469  
www.laseringusa.com  
E-mail: info@laseringusa.com



0051 SLIM EVOLUTION II meets the provisions of Directive 93/42/CEE